

Tank and Basin Heaters

Pipe Insert Heaters

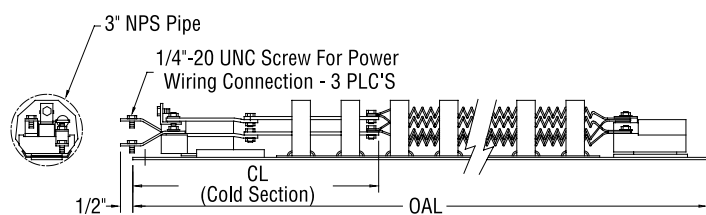
Open Coil Pipe Insert Heaters are designed to insert into a horizontal 3" pipe mounted just above the anticipated sludge level in the tank and below the expected minimum operational fluid level. These units provide a low watt density over a large surface area and are used to heat sensitive fluids. Advantages include the ability to change the heater without draining the tank and to provide up to a Schedule 80 pipe wall in mildly corrosive fluids.

Heater pipes can be customer supplied or provided by INDEECO. Pipes can be welded into the tank wall or can be attached with an ANSI flange. INDEECO can also provide a weather-resistant terminal box with NPT threads attached to the end of the heater pipe.

Consult the factory for custom heaters not represented in the following chart.

Catalog Number	Pipe Length (Inches)	KW at 480V 15 W/Sq. In.
797-129915	48	3.95
797-129916	60	5.5
797-129917	72	7.25
797-129918	84	9
797-129919	96	10.5
797-129920	108	12
797-129921	120	14
797-129922	132	16.5
797-129923	144	17.5
797-129924	156	19
797-129925	168	20

Based on a 12" cold length.



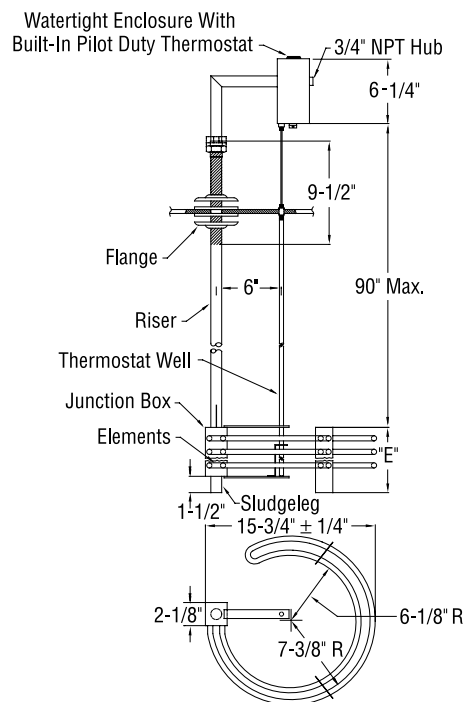
Deep Tank Heaters

Deep Tank Heaters are designed to fit into a manhole of an enclosed tank or double wall tank installed either above or below grade. Often the riser is "split" to facilitate installation. Watt densities can vary from 50 W/Sq. In. for water applications to 5 W/Sq. In. for heavy fuel oils. Controls are often provided to avoid penetrating the tank elsewhere. The element bundle diameter can range from a 12" O.D. to a maximum of 22" O.D.

Steel NEMA 4 Box

12 W/Sq. In.

Number of Elements	KW	Dimensions (Inches) E	Catalog Number	Availability			
				1 Phase		3 Phase	
				480V	208V	240V	480V
3	5	6	747N063	•	•	•	•
6	7.5	9-1/2	747N073	•	•	•	•
9	10	13-1/4	747N083	•	•	•	•
12	15	17	747N093	•	•	•	•
18	20	24-3/4	747N103	•	•	•	•
24	30	32	747N113	•	•	•	•



Tank and Basin Heaters

Cooling Tower Heaters

Cooling Tower Heaters are long cartridge heaters designed with a conservative 25 W/Sq. In. maximum watt density. These units provide a long “gentle” heat covering a majority of the tank or vessel. They are used primarily in below grade concrete sumps, for cooling towers or to heat viscous fluids. The heaters can be specified with through-the-wall or over-the-side construction in 3/4" NPT (Series 761) or 1-1/4" NPT (Series 762).

Over-the-Side Heaters eliminate the need for cutting a hole in the basin. Internal wiring runs from the horizontal heater elements through a vertical riser and extension arm with an outlet box located over the side of the basin.

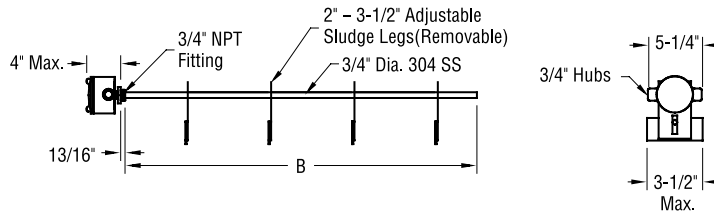
Adjustable Sludge Legs are furnished on all heaters. Located on five foot centers to keep the element in place even in high water velocities, these legs are adjustable for heights between 2" and 3-1/2".

Liquidproof/Explosion-Resistant Outlet Boxes are furnished on all heaters.

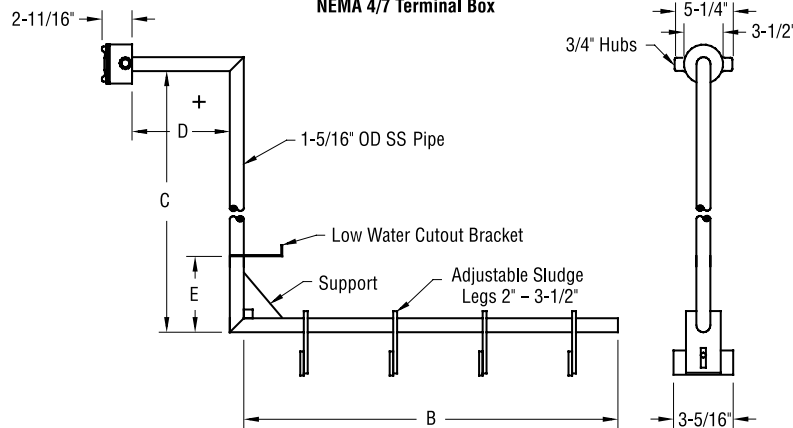
Through-the-Wall Heaters

Series	NPT (Inches)	DIA (Inches)
761	3/4	3/4
762	1-1/4	1-5/16

**Through-the-Wall Cooling Tower Heater
NEMA 4/7 Terminal Box**



**Over-the-Side Cooling Tower Heater
NEMA 4/7 Terminal Box**



Note: Dimensions B, C, D and E (if required) must be specified when ordering.

Tank and Basin Heaters

Cooling Tower Heaters (continued)

761 Series (3/4" NPT) NEMA 4 Box		
B Dimensions (Inches)	Catalog Number	Maximum KW
24	761N024	1.2
30	761N030	1.6
36	761N036	2
42	761N042	2.4
48	761N048	2.8
54	761N054	3.2
60	761N060	3.6
66	761N066	4
72	761N072	4.4
78	761N078	4.8
84	761N084	5.2
90	761N090	5.6
96	761N096	6
102	761N102	6.4
108	761N108	6.8
114	761N114	7.2
120	761N120	7.6
126	761N126	8
132	761N132	8.4
138	761N138	8.8
144	761N144	9.2
150	761N150	9.6
156	761N156	10
162	761N162	10.4
168	751N168	10.8
174	761N174	11.2
180	761N180	11.6
186	761N186	12
192	761N192	12.4
198	761N198	12.8
204	761N204	13.2
210	761N210	13.6
216	761N216	14
222	761N222	14.4
228	761N228	14.8
234	761N234	15.2
240	761N240	16

762 Series (1-1/4" NPT) NEMA 4 Box		
B Dimensions (Inches)	Catalog Number	Maximum KW
24	762N024	2.2
30	762N030	2.8
36	762N036	3.4
42	762N042	4
48	762N048	4.6
54	762N054	5.2
60	762N060	5.8
66	762N066	6.4
72	762N072	7
78	762N078	7.6
84	762N084	8.3
90	762N090	9
96	762N096	9.7
102	762N102	10.5
108	762N108	11.3
114	762N114	12
120	762N120	12.7
126	762N126	13.4
132	762N132	14.1
138	762N138	15
144	762N144	16
150	762N150	17
156	762N156	18
162	762N162	19
168	752N168	20
174	762N174	20.7
180	762N180	21.2
186	762N186	22
192	762N192	22.5
198	762N198	23
204	762N204	23.5
210	762N210	24
216	762N216	25
222	762N222	26
228	762N228	27
234	762N234	28
240	762N240	28.5

For UL Listing consult factory.