

## Commercial Baseboard Heater Commercial Sloped Top Baseboard Heater



BCI



BCSI

The BCI/BCSI commercial baseboard heaters (also known as draft barriers or sill height convectors) are designed to fit under large windows to prevent cold down drafts. These heaters can provide total or supplemental heating for a variety of applications.

### Applications

- Air, Rail or Bus Terminals
- Auditoriums
- Corridors
- Entryways
- Foyers
- Hallways
- Lobbies
- Offices

- **Installation Options:** Units may be mounted to the wall flush on the floor or on pedestals. Custom lengths, blank sections and inside or outside corners are available for wall-to-wall installations. Units can be ordered with smooth finish when the back of the heater is visible.
- **Added Safety:** The sloped-top cabinet on the BCSI prevents objects from being set on top of the heater, which can restrict airflow and cause overheating.
- **Choice of Colors:** Heaters can be matched to any décor. White or almond is standard and a wide range of optional colors and custom finishes are available.

## Standard Construction Features

**Heating Elements** – Carbon steel elements with aluminum fins float on high temperature nylon bushings for quiet operation. Stainless steel elements with aluminum fins on elements rated 1,500 watts and above. Average watt density is 275 W/ft (900 W/m). Low watt density elements of 200 W/ft (655 W/m) are also available.

**Housing** – Cabinet is constructed of 18-gauge steel with a 14-gauge aluminum front cover. The unit has an epoxy-polyester powder paint finish in white or almond. End caps are provided on all units.

**Inlet/Outlet Grilles** – The fresh air inlet grille is located on the front of the unit. The outlet grille has openings less than 0.25 inches to discourage tampering with the heating element (pencil-proof).

**Built-in Controls** – Linear limit, automatic reset thermal cutout.

**Electrical Connection** – Each baseboard heater has a junction box located on both ends and a built-in full length wireway.

**Installation Requirements** – Field or factory-installed low voltage relay and thermostat kits fit into the right-hand junction box only.

## Commercial Baseboard Heater Commercial Sloped Top Baseboard Heater

### Factory Built-in Options

Code	Description
A	Bottom Air Inlet
D3	Disconnect Switch, 277V, Double-pole, 20 Amp
L	Custom Length
M1	High Altitude Automatic Cutout
R1	24V Relay, 240V, 22 Amp; 277V, 19 Amp
R2	24V Relay with Transformer, 240V, 22 Amp; 277V, 19 Amp
R6	Pneumatic Relay, 480V, 25 Amp
R7	24V Proportional Relay
S	Smooth Finish on Heater Back
T1	Tamperproof Thermostat, Single-pole, 240V, 25 Amp; 277V, 10 Amp
T2	Tamperproof Thermostat, Double-pole, 240V, 25 Amp; 277V, 10 Amp
T5	Adjustable Thermostat, Single-pole, 240V, 25 Amp; 277V, 10 Amp
T6	Adjustable Thermostat, Double-pole, 240V, 25 Amp; 277V, 10 Amp

### Field-Installed Options

(shipped loose for field installation into heater)

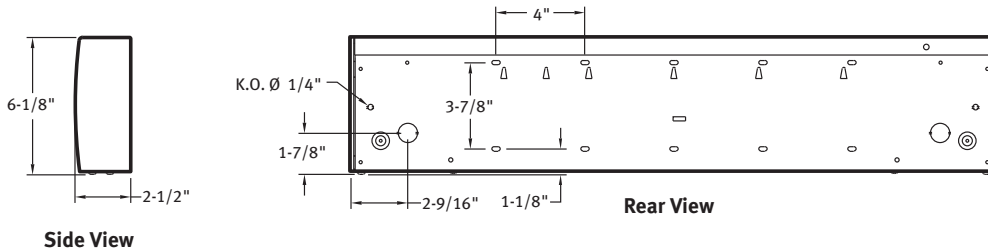
Catalog Number	Description
906-124585(1)	Inside Corner
906-124586(1)	Outside Corner
906-124587	Round Pedestal Kit, 3-5", Qty=2
906-169806	Square Pedestal Kit, 2", Qty=2
906-124588(1)	Splice Plate 2" Long
906-124589(1)	Finish Joint for Heater with Pedestal
906-124590	24V Relay Kit, 240V, 22 Amp; 277V, 19 Amp
906-124591	24V Relay Kit with Transformer, 120V, 22 Amp
906-124592	24V Relay Kit with Transformer, 208V, 22 Amp
906-124593	24V Relay Kit with Transformer, 240V, 22 Amp
906-124594	24V Relay Kit with Transformer, 277V, 19 Amp
906B-XXX(1)	Blank Section (specify length in inches-XXX)

(1) Change 906 prefix to 904 for BCSI.

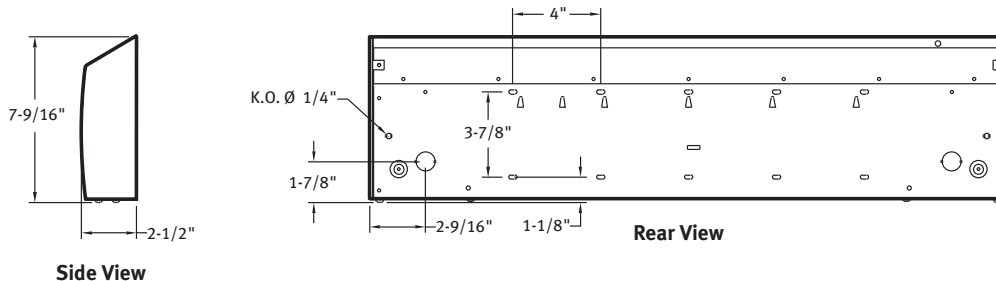
**Standard colors - Add W for white finish or A for almond finish to the end of part number.**

**Special or custom colors - See inside back cover for color codes to be added to end of part number.**

### Remote Room Thermostat – See page 96



**BCI Series**



**BCSI Series**

## Commercial Baseboard Heater Commercial Sloped Top Baseboard Heater

### Commercial Baseboard/Commercial Sloped Top Baseboard Heater Listings

Watts	Volts	Amps	Length In. (mm)	Weight lb (kg)		Catalog Number	
				BCI	BCSI	BCI	BCSI
500/375	240/208	2.1/1.8	29.1 (738)	8 (4)	9 (4)	906U00500V	904U00500V
500	120	4.2	29.1 (738)	8 (4)	9 (4)	906U00500B	904U00500B
	208	2.4	29.1 (738)	8 (4)	9 (4)	906U00500C	904U00500C
	277	1.8	29.1 (738)	8 (4)	9 (4)	906U00500N	904U00500N
750/563	240/208	3.1/2.7	39.1 (992)	10 (5)	12 (5)	906U00750V	904U00750V
750	120	6.3	39.1 (992)	10 (5)	12 (5)	906U00750B	904U00750B
	208	3.6	39.1 (992)	10 (5)	12 (5)	906U00750C	904U00750C
	277	2.7	39.1 (992)	10 (5)	12 (5)	906U00750N	904U00750N
1000/750	240/208	4.2/3.6	49.3 (1253)	13 (6)	15 (7)	906U01000V	904U01000V
1000	120	8.3	49.3 (1253)	13 (6)	15 (7)	906U01000B	904U01000B
	208	4.8	49.3 (1253)	13 (6)	15 (7)	906U01000C	904U01000C
	277	3.6	49.3 (1253)	13 (6)	15 (7)	906U01000N	904U01000N
1250/938	240/208	5.2/4.5	58.8 (1494)	15 (7)	17 (8)	906U01250V	904U01250V
1250	120	10.4	58.8 (1494)	15 (7)	17 (8)	906U01250B	904U01250B
	208	6.0	58.8 (1494)	15 (7)	17 (8)	906U01250C	904U01250C
	277	4.5	58.8 (1494)	15 (7)	17 (8)	906U01250N	904U01250N
1500/1125	240/208	6.3/5.4	67.5 (1715)	17 (8)	20 (9)	906U01500V	904U01500V
1500	120	12.5	67.5 (1715)	17 (8)	20 (9)	906U01500B	904U01500B
	277	5.4	67.5 (1715)	17 (8)	20 (9)	906U01500N	904U01500N
	208	7.2	67.5 (1715)	17 (8)	20 (9)	906U01500C	904U01500C
	277	5.4	67.5 (1715)	17 (8)	20 (9)	906U01500N	904U01500N
1750/1313	240/208	7.3/6.3	76.9 (1925)	19 (9)	22 (10)	906U01750V	904U01750V
1750	208	8.4	76.9 (1925)	19 (9)	22 (10)	906U01750C	904U01750C
	277	6.3	76.9 (1925)	19 (9)	22 (10)	906U01750N	904U01750N
	277	6.3	76.9 (1925)	19 (9)	22 (10)	906U01750N	904U01750N
2000/1500	240/208	8.3/7.2	85.5 (2175)	22 (10)	25 (11)	906U02000V	904U02000V
2000	208	9.6	85.5 (2175)	22 (10)	25 (11)	906U02000C	904U02000C
	277	7.2	85.5 (2175)	22 (10)	25 (11)	906U02000N	904U02000N
	277	7.2	85.5 (2175)	22 (10)	25 (11)	906U02000N	904U02000N
2250/1688	240/208	9.4/8.1	94.5 (2400)	24 (11)	27 (12)	906U02250V	904U02250V
2250	208	10.8	94.5 (2400)	24 (11)	27 (12)	906U02250C	904U02250C
	277	8.1	94.5 (2400)	24 (11)	27 (12)	906U02250N	904U02250N
	277	8.1	94.5 (2400)	24 (11)	27 (12)	906U02250N	904U02250N
2500/1875	240/208	10.4/9.0	103.6 (2632)	26 (12)	30 (14)	906U02500V	904U02500V
2500	208	12.0	103.6 (2632)	26 (12)	30 (14)	906U02500C	904U02500C
	277	9.0	103.6 (2632)	26 (12)	30 (14)	906U02500N	904U02500N
	277	9.0	103.6 (2632)	26 (12)	30 (14)	906U02500N	904U02500N

Other voltages available. Consult factory. All models listed are single-phase.

**Standard colors - Add W for white finish or A for almond finish to the end of catalog number.**

Special or custom colors - See inside back cover for color codes to be added to end of catalog number.